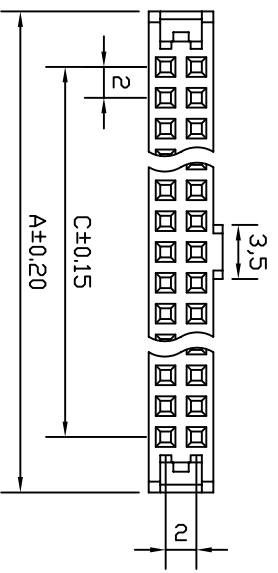
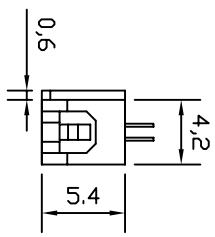
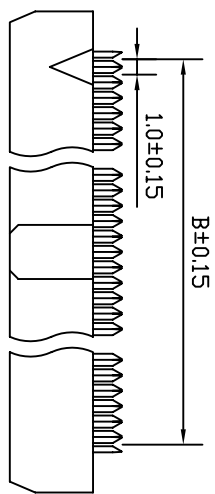
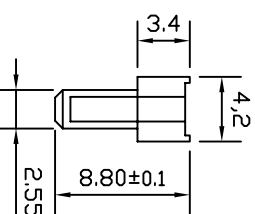
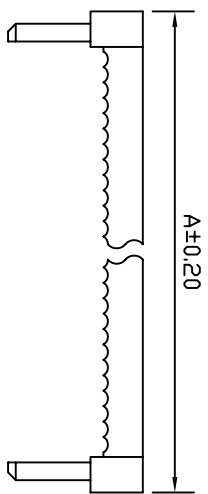
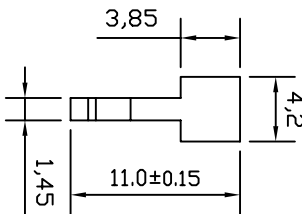
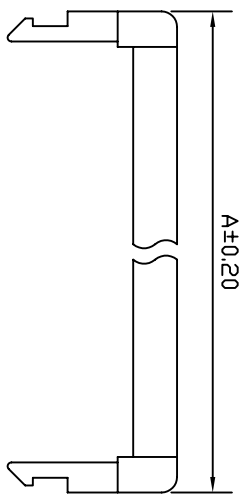


NO.	REV.	MODIFY NOTES	REVISED	DATE
1	A	L060813	MIKE	06.08.13
2	B			



Material:
 Insulator: PBT+30% Glass Fiber (UL94V-0),
 Contact: Copper Alloy with Gold or Tin over Nickel Plated.
 Specification:
 Current Rating: 1 Amp,
 Withstanding Voltage: AC 500V for 1 Minute,
 Insulation Resistance: 1000MΩ Min. at DC 500V,
 Contact Resistance : 15mΩ Max.,
 Operating Temperature: -40°C ~ +105°C.

Pos.	Dim. A	Dim. B	Dim. C
6	11.20	5.00	4.00
8	13.20	7.00	6.00
10	15.20	9.00	8.00
12	17.20	11.00	10.00
14	19.20	13.00	12.00
16	21.20	15.00	14.00
18	23.20	17.00	16.00
20	25.20	19.00	18.00
22	27.20	21.00	20.00
24	29.20	23.00	22.00
26	31.20	25.00	24.00
28	33.20	27.00	26.00
30	35.20	29.00	28.00
32	37.20	31.00	30.00

Pos.	Dim. A	Dim. B	Dim. C
34	39.20	33.00	32.00
36	41.20	35.00	34.00
38	43.20	37.00	36.00
40	45.20	39.00	38.00
44	49.20	43.00	42.00
48	53.20	47.00	46.00
50	55.20	49.00	48.00
54	59.20	53.00	52.00
56	61.20	55.00	54.00
60	65.20	59.00	58.00
62	67.20	61.00	60.00
64	69.20	63.00	62.00
68	73.20	67.00	66.00
80	85.20	79.00	78.00

SIGNATURE	DATE
DRN.	
CHK.	06.08.13
APP.	

TOLERANCE:	宏奎電子有限公司	
X. ±XXX	SKYSUKTRONICS INDUSTRIAL CO., LTD.	
.X ±0.20	PRODUCT NAME	2.0MM IDC Socket
.XX ±0.10	PART NO.	ISS2001-XX
ANG.		Perspective

CODE NO.	LS00
CUS. NO.	
SCALE	None
UNIT	mm
PAGE	1/1